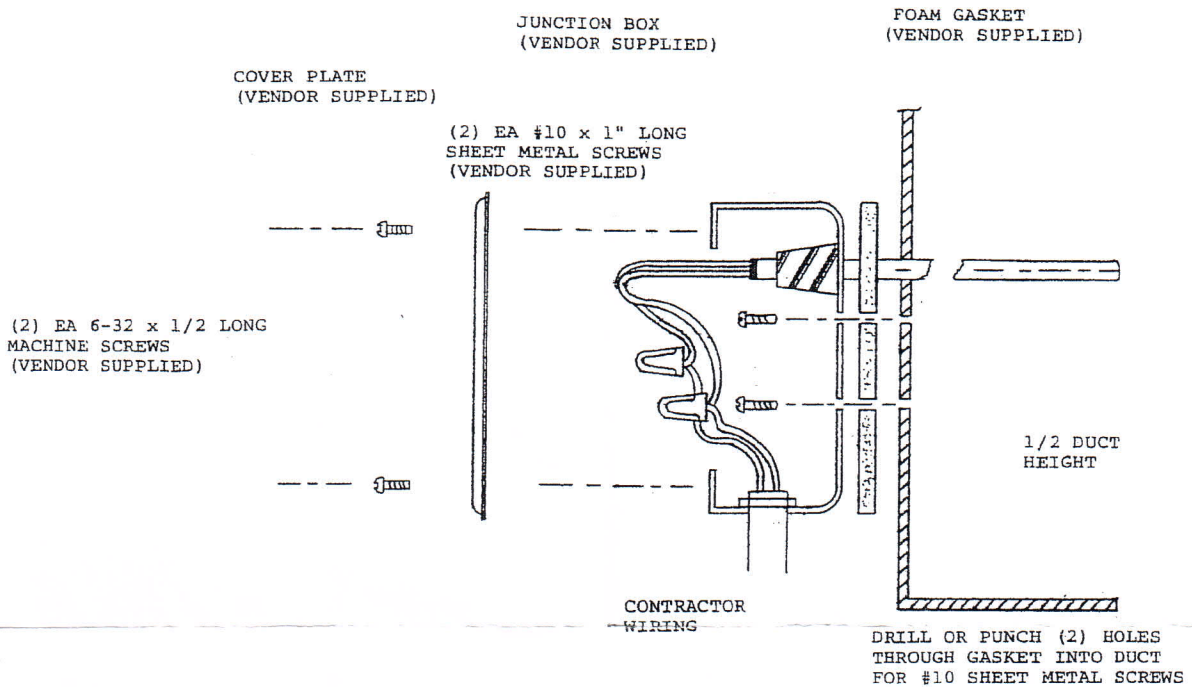


DUCT AIR TEMPERATURE SENSOR INSTALLATION



I. COMPONENT LIST:

The Model T42 Series Duct Air Sensor Kits include the following components:

- 1) Duct Air Sensor mounted to utility box with attached gasket
- 2) No.10 Sheet Metal Screws
- 1) Utility Box Cover
- 2) No. 6-32 Machine Screws
- 2) Wire Nuts

II. GENERAL INSTALLATION AND OPERATION:

The Model T42 Series Duct Air Sensors are intended for air temperature measurement in any type of Sheet Metal HVAC Duct Work with mount hardware provided. Mounting is accomplished by providing a hole in the duct for sensor insertion and attaching the utility box to the outside of the duct with sheet metal screws.

III. MOUNTING LOCATION:

Punch or cut a 5/16 inch minimum diameter hole at a point approximately 1/2 of the duct height for the probe to be inserted. Remove one of the utility box knockouts in the desired position for system wire lead in. Insert the probe into the duct and position the box against the duct. (The long dimension of the box should be parallel to the axis of round ducts.) Match punch or drill 2 holes for No. 10 sheet metal screws into the duct through the utility box plus foam gasket and mount the box. The duct air temperature sensor should be installed by connecting the thermistor leads to the sensor wire using wire nuts. (Polarity is not important.) If shielded sensor wire is provided, strip back the shield and tape to prevent contact. Attach the cover to the box with 6-32 machine screws.

IV. GENERAL PRECAUTIONS:

- 1) Select sensor length such that tip is within center 1/3 of duct width.
- 2) Mount sensor approximately at 1/2 the duct height.
- 3) Do not overtighten the sheet metal screws.

INSTALLED AND WIRED BY ELECTRICAL CONTRACTOR